



FUNCTIONAL WORKWEAR



SIMPLY TECHWISE





## MACSEIS FUNCTIONAL CORPORATE & WORK TEAM WEAR COLLECTION

MACSEIS Product Collection is tailored to fully uniform-equip both Corporate and Specialized companies from administration to manufacturing, as well as for end users that demands high functional comfort and superbly crafted ergonomic relief while professionally active.

Our Products are included waterproof Functions well balanced with high breathable levels - composed to offer highest in Comfort. Our fabrics close to skin are composed to absorb excess liquid fast. Our quick POWERDRY keeps you in a fast-drying mode. All our Functions are actively real.

3D articulated body shapes and high stretch levels are ensuring you a very high level of ergonomic relief and mobility.

MACSEIS excites with styles that are sporty, trendy and environmental recycle sustainable. All Products are OEKOTEX100.

Choose the new generation in Corporate Wear and blend an exceptional toned uniform or team wear that is to what you think looks the business and matches your company CI. You can Mix & Match across the full MACSEIS Collection.

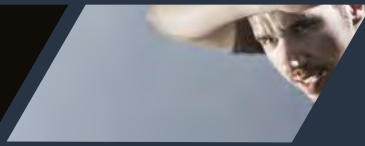


*"You feel free and have high level of ergonomic mobility when wearing MACSEIS Products"*

**Sebastian Asch**, Race Driver & MACSEIS Brand Ambassador

**PROFORCE&FLEECE**

5



**HIGHTECH**

27



**DOWNTech**

39



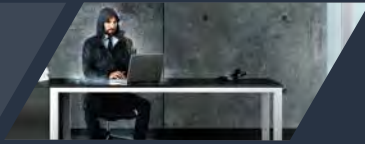
**TECH SOFTSHELL**

51



**LIGHT JACKETS**

83



**PRONEON LINE**

FWW3



**MACTRONIC LINE**

FWW13



**SAFETY SHOES**

FWW27



**POWERDRY®**

This MACSEIS POWERDRY long lasting physical quick dry fabric absorbs perspiration instantly and dries quickly while creating high level of comfort while performing actively.

**Dintex®**

This MACSEIS EN343 Functional Hi-Tech Fabric is engineered using DINTEX Technical Membrane in either a 2- or 3-Layer fabric composition to achieve high levels of both waterproof protection and breathable comfort.

**PROTECH™**

MACSEIS incorporate Functional PROTECH TPU-Films in its 3-Layer bonded fabrics to balance waterproof and breathable levels to your exact protection and superb comfort.

**STRETCH**

Several MACSEIS and all MACSEIS WorkWear Products are made in 4WAYSTRETCH, offering a high level of Ergonomic Mobility. We tailor in articulated 3D body shapes to enhance the stretch level to its maximum.

**MULTISTRETCH**

MACSEIS knitted fabrics are crafted and developed in a MULTISTRETCH Knit to achieve stretch levels for your ergonomic mobility while wearing and active.

**MAX 40° HANG TO DRY**

MACSEIS Products are all Functional and Ergonomic. We include a long list of technical components and functions to enhance your wellbeing while active also going forward. To preserve our world of technologies in your MACSEIS Product we exclusively tailor to wash by max40 degrees and hang to dry - do not tumble dry. This environmental progressive initiative does not stop you from keeping your MACSEIS Product clean. Modern wash detergents are effectively manufactured to clean at much lower water degrees. MACSEIS recommend using Wash Gels.



All MACSEIS Products are made using only OEKOTEX100 Certified Components, Fabrics and Treatments. Our Fabrics are developed and produced to highest standards in color fastness and are AZO, PFOA and PFOAS free. Our metal components are nickel-free. Our Zippers are from YKK, SBS or YBF. MACSEIS Engineering Department works to constantly run SGS OEKOTEX100 STANDARD tests on batches of components and fabrics supplied to the manufacturing of our Products. By only purchasing OEKOTEX100 Standard Certified components and fabrics MACSEIS ensures that our Products are produced to EU-Standard and meets PSA Protection Categories.



All MACSEIS Products are manufactured in Business Social Compliance Initiative (BSCI) Audited factories. BSCI is a supply chain management system that supports companies to drive social compliance and improvements within its manufacturing and supply chain.



PREFORCE &  
FLEECE





# CREATOR

POWERDRY®

MALESIZES S - 3XL

FEMALESIZES XS - 2XL

## POWERDRY MELANGE HOODED SWEAT

**FABRIC:** 220gsm | 100% Polyester Powerdry

**FEATURES:** Integrated Hood with Cord  
Full Two-Tone Main Zipper | Front Pocket  
Elbow Patches | Sporty cut

**TECHWISE:** POWERDRY | Breathable | Stretchy

**COLORS:** MacBlack Melange | FlashStoneGrey Melange



MS1101



MS1104



MS1103



MS1102



# CREATOR ROUNDNECK

**POWERDRY®**

MALESIZES S - 5XL

FEMALESIZES XS - 2XL

POWERDRY MELANGE ROUNDNECK SWEAT

**FABRIC:** 220gsm 100% Polyester POWERDRY

**FEATURES:** Elbow Patches | Sporty cut

**TECHWISE:** POWERDRY | Breathable | Stretchy

**COLORS:** MacBlack Melange - FlashStoneGrey Melange



MS1101



MS1108



MS1107



MS1106



# SLASH

POWERDRY®

MALESIZES S - 5XL



MS5009

## POWERDRY T-SHIRT MALE

**SIZES:** S/M/L/XL/2XL/3XL/4XL/5XL

**FABRIC:** 180gsm 50% Cotton | 50% Polyester POWERDRY Pique

**TECHWISE:** POWERDRY | Breathable  
Stretchy | Anti-Bacterial | Cooling-Effect

**COLORS:** MacBlack | MacWhite | MacRed | MacBlue  
FlashSkyBlue | FlashStoneGrey | MacRoyalBlue  
MacGreenFluorescent | MacOrangeFluorescentMacGrey



MS5001



MS5002



MS5003



MS5004



MS5005



MS5006



MS5007



MS5008



MS5009



MS5010



# FLASH

POWERDRY®

MALESIZES S - 5XL

FEMALESIZES XS - 2XL



MS3001

## POWERDRY POLO SHIRT

**FABRIC:** 180gsm 50% Cotton | 50% Polyester POWERDRY Pique

**TECHWISE:** Physical Quick Dry | Breathable Stretchy | Anti-Bacterial and Cooling-Effect

**COLORS:** MacBlack | MacWhite | FlashRed | MacBlue  
FlashSkyBlue | FlashStoneGrey | MacRoyalBlue  
MacGreenFluorescent | MacGrey



MS3002



MS3006



MS3003



MS3007



MS3004



MS3008



MS3005



MS3010



# SIGNATURE

POWERDRY®

MALESIZES S - 5XL

FEMALESIZES XS - 2XL



MWW400001

## TWOTONE POWERDRY POLO SHIRT

**FABRIC:** 180gsm 35% Cotton | 65% Polyester POWERDRY Pique

**FEATURES:** Contrast Stitching

**TECHWISE:** Physical Quick Dry | Breathable | Stretchy | Anti-Bacterial | Cooling-Effect

**COLORS:** MacBlack/MacGrey | MacBlue/  
MacOrangeFluorescent | MacGrey/MacGreenFluorescent  
| MacRed/MacGrey MacOrangeFluorescent/MacBlue |  
MacGreenFluorescent/MacGrey



MWW400005



MWW400002



MWW400003



MWW400004



MWW400006



MWW400013



MWW400015



# SOFT FLEECE

MULTISTRETCH  
PROTECH™

MALESIZES S - 5XL



BONDED PROTECH3000BA MICRO FLEECE

**FABRIC:** 100% Polyester Super Micro Tech Fleece with Bonded Mesh | MULTISTRETCH Knit

**FEATURES:** Side Pockets with zippers | Reversed Zippers

**TECHWISE:** Breathable 3.000g/m2/24h | Water Repellent

**COLORS:** MacBlack | MacBlue | FlashStoneGrey | MacGrey

MS3001

MS33003



MS33005



MS33007





# SOFT FLEECE

MULTISTRETCH  
PROTECH™

FEMALE SIZES XS - 2XL



BONDED PROTECH3000BA MICRO FLEECE

**FABRIC:** 100% Polyester Super Micro Tech Fleece with Bonded Mesh | MULTISTRETCH Knit

**FEATURES:** Side Pockets with zippers | Reversed Zippers

**TECHWISE:** Breathable 3.000g/m2/24h | Water Repellent

**COLORS:** MacBlack | MacBlue | FlashStoneGrey | MacGrey

MS33002

MS33004



MS33006



MS33008





# SOFT VEST

MULTISTRETCH  
PROTECH™

MALESIZES S - 5XL  
FEMALESIZES XS - 2XL



BONDED PROTECH3000BA MICRO VEST

**FABRIC:** 100% Polyester Super Micro Tech Fleece with Bonded Mesh | MULTISTRETCH Knit

**FEATURES:** Side Pockets with zippers | Reversed Zippers

MS33011

**TECHWISE:** Breathable 3.000g/m2/24h | Water Repellent

**COLORS:** MacBlack | MacBlue | MacGrey



MS33013



MS33015



MS33012



MS33014



MS33016



# RIPTIDE

MULTISTRETCH

PROTECH™

MALESIZES S - 5XL

FEMALESIZES XS - 2XL

BONDED PROTECH3000BA TEDDY  
FLEECE/KNIT

**FABRIC:** 100% Polyester Super Knit Bonded with a  
Teddy Fleece | MULTISTRETCH Knit

**FEATURES:** Side Pockets with zippers and Pocket  
Applications | Reversed Zippers | Integrated Hood  
Sleeve Pocket

**TECHWISE:** Breathable 3.000g/m2/24h  
Water Repellent

**COLORS:** MacBlack/MacGrey | MacBlack/MacRed  
MacRoyalBlue/MacBlack

MS26001



MS26002



MS26009



MS26010



MS26019



# RIPTIDE LIGHT

MULTISTRETCH

MALESIZES S - 5XL

FEMALESIZES XS - 2XL



MS26003

BREATHABLE-KNIT HOODED TOP

**FABRIC:** 100% Polyester Super Soft Knit  
Breathable & MULTISTRETCH Knit

**FEATURES:** Side Pockets with zippers and Pocket Applications  
Reversed Zippers and Integrated Hood

**COLORS:** MacBlack/MacGrey | MacBlack/MacRed | MacRoyalBlue/MacBlack



MS26004



MS26005



MS26007



MS26006



MS26008



HIGHTECH





EXCEL  
Dintex®

MALESIZES S - 3XL  
FEMALESIZES XS - 3XL

DINTEX10000/8000 SHELL JACKET

**FABRIC:** Superb Smooth High-Quality Outer Shell  
in a 3-layer Laminated | Combination with a  
Hi-Tech Functional Membrane and Tricot  
Tech Lining Heat-Thread 7000 m2/24h

**FEATURES:** TPU Waterproof Zippers | Zip-Off Hood  
Reversed Air-Intake Zippers in Armpits  
Snap-on Sleeve Ends | Taped Seams | Sleeve Pocket

**TECHWISE:** Waterproof 10.000mmH2O  
Breathable 8.000m2/24h  
Functional Lining Breathable 8000g/m2/24h  
WINDSTOPPER Function | EN343

**COLOR:** MacBlack/FlashStoneGrey

MS7001



MS7003

DINTEX10000/8000 SHELL JACKET

**FABRIC:** Superb Smooth High-Quality Outer Shell  
in a 3-layer Laminated | Combination with a  
Hi-Tech Functional Membrane and Tricot  
Tech Lining Heat-Thread 7000 m2/24h

**FEATURES:** TPU Waterproof Zippers | Zip-Off Hood  
Reversed Air-Intake Zippers in Armpits  
Snap-on Sleeve Ends | Taped Seams | Sleeve Pocket

**TECHWISE:** Waterproof 10.000mmH2O  
Breathable 8.000m2/24h  
Functional Lining Breathable 8000g/m2/24h  
WINDSTOPPER Function | EN343

**COLOR:** MacBlack/FlashStoneGrey





OFFICE  
Dintex®

UNISEX SIZES XS - 3XL



DINTEX8000/5000 PARKA JACKET

**FABRIC:** Superb Smooth High-Quality Outer Shell in a 3-layer Laminated | Combination with a Hi-Tech Functional Membrane and Tricot Breathable Lining

**FEATURES:** Brushed Metal Zippers | Zip-Off Hood  
Insulation Padding -3° and Taped Seams

**TECHWISE:** Waterproof 10.000mmH2O | Breathable 8.000g/m2/24h | WINDSTOPPER Function | EN343

**COLOR:** MacBlack

MS8001

MS9001



DINTEX10000/5000 PARKA JACKET

**FABRIC:** Superb Smooth High-Quality Outer Shell in a 3-layer Laminated | Combination with a Hi-Tech Functional Membrane and Tricot | Lining Breathable

**FEATURES:** No. 8 Big Zippers | Zip-Off Hood  
Sewn on Pockets | Chest Pockets | Name-Card snap-on Holders on Chest | Snap-on Sleeve Ends  
Wind-Skirt | Insulation Padding -10° C and Taped Seams

**TECHWISE:** Waterproof 10.000mmH2O  
Breathable 8.000g/m2/24h  
WINDSTOPPER Function | EN343

**COLOR:** MacBlack/FlashStoneGrey

EXPLORE  
Dintex®

UNISEX SIZES XS - 5XL



# PERFORMER

Dintex®



UNISEX SIZES XS - 5XL



## DINTEX8000/5000 3-IN-1 JACKET

**FABRIC OUTER JACKET:** Polyester RIBTECH High Density 3-Layer Laminated Hi-Tech outer shell with a Functional Membrane and Tricot

**FABRIC INNER JACKET:** Nylon Single Tone DOWNPROOF High-Density

**FEATURES:** Zip-Off Hood | TPU Waterproof Zippers  
Snap-On Sleeve Ends | Zip-in Down Tech Jacket

**TECHWISE:** Waterproof 8000mm H2O/Breathable  
5000g/m<sup>2</sup>/24h | Tricot Taped Seams  
WINDSTOPPER Function | High Level of Down Fill  
Power 90% Duck Down/10% Duck Feathers  
Washed to EU Standards

MS34001-1

**COLORS:** MacBlack/MacGrey | MacBlack/MacRed  
MacBlack/MacOrange | MacBlack/MacRoyalBlue  
MacBlack/MacGreen | MacBlue/MacGrey  
MacBlue/MacOrange | MacBlue/MacRoyalBlue



MS34001-2



MS34001-3



MS34001-4



MS34001-5





# PERFORMER

Dintex®



UNISEX SIZES XS - 5XL



## DINTEX8000/5000 3-IN-1 JACKET

**FABRIC OUTER JACKET:** Polyester RIBTECH High Density 3-Layer Laminated Hi-Tech outer shell with a Functional Membrane and Tricot

**FABRIC INNER JACKET:** Nylon Single Tone DOWNPROOF High-Density

**FEATURES:** Zip-Off Hood | TPU Waterproof Zippers | Snap-On Sleeve Ends | Zip-in Down Tech Jacket

**TECHWISE:** Waterproof 8000mm H2O/  
Breathable 5000g/m<sup>2</sup>/24h | Tricot Taped Seams  
| WINDSTOPPER Function | High Level of Down  
Fill Power 90% Duck Down/10% Duck Feathers |  
Washed to EU Standards

MS34002-1

**COLORS:** MacBlue/MacGrey | MacBlue/MacRed |  
MacBlue/MacOrange | MacBlue/MacRoyalBlue



MS34002-2



MS34002-3



MS34002-4





# PERFORMER

Dintex®





DOWNTTECH





# GALAXY

MALESIZES S - 3XL  
FEMALESIZES XS - 2XL

## 50/50 DOWNTech JACKET

**FABRIC:** Superb Smooth High-Quality High-Density outer shell with Memory Function  
DOWNPROOF 400T

**FEATURES:** No. 8 Big Zippers | Zip-Off Hood  
Water Repellent

**TECHWISE:** 50% Duck Down/50% Duck Feathers  
Washed to EU-Standard

**COLOR:** MacBlack

MS29001



MS29002





# JET

DUPONT™  
SORONA®

MALESIZES S - 3XL  
FEMALESIZES XS - 2XL

## 90/10 LIGHT DOWNTech JACKET

**FABRIC:** Superb Smooth Single Tone High-Quality  
outer and inner shell | DOWNPROOF

**FEATURES:** Reversed Zippers | Stitch-Through

**TECHWISE:** 90% Duck Down/10% Duck Feathers  
Washed to EU-Standard | Water Repellent

**COLORS:** MacBlack/MacGrey  
MacBlack/MacGrey Melange

MS31001



MS31008



MS31011



MS31007



MS31012



MS31002



# SKY

DUPONT™  
SORONA®

MALESIZES S - 3XL  
FEMALESIZES XS - 2XL

## LIGHT DOWNTech VEST

FABRIC: Superb Smooth Single Tone High-Qual  
outer and inner shell | DOWNPROOF

FEATURES: Reversed Zippers | Stitch-Through

TECHWISE: 90% Duck Down/10% Duck Feathers  
Washed to EU-Standard | Water Repellent

COLORS MALE: MacBlack/MacGrey - MacRed/  
MacBlack - MacOrangeFluorescent/MacBlue -  
MacGreenFluorescent/MacBlack

COLORS FEMALE: MacBlack/MacGrey - MacRed/  
MacBlack

MS32001



MS32002



MS2003



MS32005



MS32007



MS32009





# PREDATOR

MALESIZES S - 3XL  
FEMALESIZES XS - 2XL

## LIGHT DOWNTech JACKET

**FABRIC:** 100% Polyester Superb Smooth  
TwoTone-Color High-Quality Outer and  
Inner Shell DOWNPROOF

**FEATURES:** Reversed Zipper | Water Repellent  
Stitch-Through | Tailored in a Sporty Look

**TECHWISE:** 90% Duck Down/10% Duck Feathers  
Washed to EU-Standard

**COLORS:** FlashStoneGrey/MacBlack  
MacBlue/Silver | Macblack/Silver

MS31005



MS31004



MS31003



MS31009



MS31006



MS31010



DOWNTech





TECH  
SOFTSHELL





# OUTLOOK

**PROTECH™**  
**STRETCH**

MALESIZES S - 3XL

FEMALESIZES XS - 2XL

TWOTONE  
PROTECH8000/5000  
SOFT SHELL JACKET

**FABRIC:** Super Soft Grip Making  
a very Smooth Soft Shell Bonded  
with a Functional TPU-Film and a  
Super Tight Micro Fleece  
96% Polyester/  
4% Spandex STRETCH

**FEATURES:** Reversed  
TPU-Waterproof Two-Tone Zippers  
Zip-Off Hood  
Snap-On Sleeve Ends  
Sporty Fitted Cut  
Panel-to-Panel Stitching  
Contrast Fine-Thread Stitching

**TECHWISE:** Waterproof  
8.000mmH<sup>2</sup>O  
Breathable 5.000g/m<sup>2</sup>/24h  
WINDSTOPPER FunctionC

**COLOR:** MacBlack | FlashRed

MS10003



MS11003





# TWOTONE PROTECH™ STRETCH

MALESIZES S - 5XL

## TWOTONE PROTECH8000/5000 SOFT SHELL JACKET

**FABRIC:** Super Soft Grip Making  
a very Smooth Soft Shell Bonded  
with a Functional TPU-Film and a  
Super Tight Micro Fleece  
96% Polyester/  
4% Spandex STRETCH

**FEATURES:** Reversed  
TPU-Waterproof Two-Tone Zippers  
Zip-Off Hood  
Snap-On Sleeve Ends  
Sporty Fitted Cut  
Panel-to-Panel Stitching  
Contrast Fine-Thread Stitching

**TECHWISE:** Waterproof  
8.000mmH<sup>2</sup>O  
Breathable 5.000g/m<sup>2</sup>/24h  
WINDSTOPPER Function

**COLOR:** MacBlack/FlashRed

300013



MWW300004



MS300005



MS300006



MS300007



# TWOTONE PROTECH™ STRETCH

FEMALE SIZES XS - 2XL

TWOTONE  
PROTECH8000/5000  
SOFT SHELL JACKET

**FABRIC:** Super Soft Grip Making  
a very Smooth Soft Shell Bonded  
with a Functional TPU-Film and a  
Super Tight Micro Fleece  
96% Polyester/  
4% Spandex STRETCH

**FEATURES:** Reversed  
TPU-Waterproof Two-Tone Zippers  
Zip-Off Hood  
Snap-On Sleeve Ends  
Sporty Fitted Cut  
Panel-to-Panel Stitching  
Contrast Fine-Thread Stitching

**TECHWISE:** Waterproof  
8.000mmH<sup>2</sup>O  
Breathable 5.000g/m<sup>2</sup>/24h  
WINDSTOPPER Function

**COLOR:** MacBlack/FlashRed

MWW300014



MWW300008



MWW300009



MWW300010



MWW300011



# SAFARI

**PROTECH™**  
**STRETCH**

MALESIZES S - 5XL

## PROTECH8000/5000 SOFT SHELL JACKET

**FABRIC:** Super Soft Grip Making  
a very Smooth Soft Shell Bonded  
with a Functional TPU-Film and a  
Super Tight Micro Fleece  
96% Polyester/4% Spandex  
STRETCH

**FEATURES:** Reversed  
TPU-Waterproof Zippers  
Zip-Off Hood | Snap-On Sleeve  
Ends Sporty Fitted Cut  
Panel-to-Panel Stitching

**TECHWISE:** Waterproof  
8000 mmH<sup>2</sup>O  
Breathable 5000g m<sup>2</sup>/24h  
WINDSTOPPER Function

**COLORS:** MacBlack  
FlashStoneGrey | MacBlue  
MacGrey

MS25001



MS25002



MS25003



MS25007



MS25009



# SAFARI PROTECH™ STRETCH

FEMALESIZES XS - 2XL

## PROTECH8000/5000 SOFT SHELL JACKET

**FABRIC:** Super Soft Grip Making  
a very Smooth Soft Shell Bonded  
with a Functional TPU-Film and a  
Super Tight Micro Fleece  
96% Polyester/4% Spandex  
STRETCH

**FEATURES:** Reversed  
TPU-Waterproof Zippers  
Zip-Off Hood | Snap-On Sleeve  
Ends Sporty Fitted Cut  
Panel-to-Panel Stitching

**TECHWISE:** Waterproof  
8000 mmH<sup>2</sup>O  
Breathable 5000g m<sup>2</sup>/24h  
WINDSTOPPER Function

**COLORS:** MacBlack  
FlashStoneGrey | MacBlue  
MacGrey

MS25004



MS25005



MS25006



MS25008



MS25010



**PROTECH™**  
**STRETCH**





# VENTURE PROTECH™ STRETCH

MALESIZES S - 5XL

PROTECH7000BA SUPER  
LIGHT SOFT SHELL

**FABRIC:** A Composition of three  
different Super Light STRETCH  
Soft Grip Tech Soft Shell's Fabrics  
Bonded with a Functional  
TPU-Film and Superb Inside  
Fabrics  
92% Polyester  
8% Spandex STRETCH

**FEATURES:** Reversed  
TPU-COLORCORE Zippers  
Zip-In Hood | Reflective Trim  
Top Stitching  
Extremely Sporty Look  
Extreme High Level of  
3D Ergonomic Mobility

**TECHWISE:** Breathable  
7000g/m<sup>2</sup>/24h | Water Repellent

**COLORS:** MacBlack/Macgrey  
MacBlue/Orange  
MacGrey/MacGreen  
MacBlack/MacRed  
MacBlack/MacRoyalBlue

MS40001



MS40003



MS40005



MS40007



MS40009



# VENTURE PROTECH™ STRETCH

FEMALESIZES XS - 2XL

## PROTECH7000BA SUPER LIGHT SOFT SHELL

**FABRIC:** A Composition of three  
different Super Light STRETCH  
Soft Grip Tech Soft Shell's Fabrics  
Bonded with a Functional  
TPU-Film and Superb Inside  
Fabrics  
92% Polyester  
8% Spandex STRETCH

**FEATURES:** Reversed  
TPU-COLORCORE Zippers  
Zip-In Hood | Reflective Trim  
Top Stitching  
Extremely Sporty Look  
Extreme High Level of  
3D Ergonomic Mobility

**TECHWISE:** Breathable  
7000g/m<sup>2</sup>/24h | Water Repellent

**COLORS:** MacBlack/Macgrey  
MacBlue/Orange  
MacGrey/MacGreen  
MacBlack/MacRed  
MacBlack/MacRoyalBlue

MS40002



MS40004



MS40006



MS40008



MS40010



# TREK

## PROTECH™ STRETCH

MALESIZES S - 5XL

### PROTECH5000BA LIGHT SOFT SHELL

**FABRIC:** Super Soft Grip 96% Polyester/4% Spandex  
STRETCH Soft Shell Bonded with a TPU-Film and  
Micro Fleece

**FEATURES:** Reversed Zippers  
Snap-On Sleeve Ends | Sporty Aspen Cut

**TECHWISE:** Breathable 5000g/m<sup>2</sup>/24h  
STRETCH | Water Repellent

**COLORS:** MacBlack | MacBlue | MacRed | MacGrey

MS19001



MS19003



MS19007



MS19009





# TREK

## PROTECH™ STRETCH

FEMALESIZES XS - 2XL

### PROTECH5000BA LIGHT SOFT SHELL

**FABRIC:** Super Soft Grip 96% Polyester/4% Spandex  
STRETCH Soft Shell Bonded with a TPU-Film and  
Micro Fleece

**FEATURES:** Reversed Zippers  
Snap-On Sleeve Ends | Sporty Aspen Cut

**TECHWISE:** Breathable 5000g/m<sup>2</sup>/24h  
STRETCH | Water Repellent

**COLORS:** MacBlack | MacBlue | MacRed | MacGrey

MS19002



MS19004



MS19008



MS19010





# TREK CAP

**PROTECH™**  
**STRETCH**

MALESIZES S - 5XL

FEMALESIZES XS - 2XL

## PROTECH5000BA LIGHT SOFT SHELL

**FABRIC:** Super Soft Grip 96% Polyester/4% Spandex  
STRETCH Soft Shell Bonded with a TPU-Film and  
Micro Fleece

**FEATURES:** Reversed Zippers | Snap-On Sleeve Ends  
Zip-Off Hood | Sporty Aspen Cut

**TECHWISE:** Breathable 5000g/m<sup>2</sup>/24h  
STRETCH | Water Repellent

**COLORS:** MacBlack - MacBlue

MS27001



MS27004



MS27003



MS27002





# TREK VEST

**PROTECH™**  
**STRETCH**

MALESIZES S - 5XL

FEMALESIZES XS - 2XL

## PROTECH5000BA LIGHT VEST

**FABRIC:** Super Soft Grip 96% Polyester/4% Spandex  
STRETCH Soft Shell Bonded with a TPU-Film and  
Micro Fleece

**FEATURES:** Reversed Zippers | Snap-On Sleeve Ends  
Zip-Off Hood | Sporty Aspen Cut

**TECHWISE:** Breathable 5000g/m<sup>2</sup>/24h  
STRETCH | Water Repellent

**COLORS:** MacBlack | MacBlue | MacRed

MS28001



MS28008



MS28003



MS28007



MS28002



MS28004



# NERO

**PROTECH™**  
**STRETCH**

UNISEX SIZES XS - 5XL

NERO  
PROTECH8000/5000  
PADDED TECH SOFT  
SHELL JACKET

**FABRIC:** Super Soft Grip making  
a very Smooth Soft Shell Bonded  
with a Functional TPU-Film and a  
Super Tight Micro Fleece  
96% Polyester/4% Spandex  
STRETCH

**FEATURES:** Reversed  
TPU-Waterproof Zippers  
No. 8 Main and Pocket Zippers  
Zip-Off Hood | Padding -8° C  
Air-Intakes on Chest  
Polyester Lining | Wind-Skirt  
Sleeve Pocket  
Snap-On Sleeve Ends  
Impeccable Sporty Look

**TECHWISE:** Waterproof  
8000mmH<sup>2</sup>O  
Breathable 5000g/m<sup>2</sup>/24h  
WINDSTOPPER Function

**COLORS:** MacBlack | MacBlue

MS12001



MS12002





# ATARI VEST

**PROTECH™**  
**STRETCH**

MALESIZES S - 3XL

FEMALESIZES XS - 2XL

PROTECH8000/5000  
PADDED TECH VEST

**FABRIC:** Soft Grip very Smooth  
Soft Shell Bonded with a  
Functional TPU-Film and a  
Super Tight Micro Fleece  
96% Polyester/4% Spandex  
STRETCH

**FEATURES:** Reversed  
TPU-Waterproof Zippers  
Zip-Off Hood | Padding -3°C  
Stepped Lining | Sporty Cut

**TECHWISE:** Waterproof  
8000mmH<sup>2</sup>O  
Breathable 5000g/m<sup>2</sup>/24h  
WINDSTOPPER Function

**COLOR:** MacBlack

MS14001



MS15001





# MEDIA CAP

**PROTECH™**  
**STRETCH**

ONE SIZE

PROTECH5000BA  
STRETCH  
TECH SOFT SHELL CAP

**FABRIC:** Super Soft Grip 96%  
Polyester/4% Spandex Soft Shell  
Bonded with a Micro Fleece

**FEATURES:** 6-Panel Baseball Look  
Curved Sun Shade  
Metal Buckle Closure with  
Back Adjustment Strap

**TECHWISE:** Breathable  
5000g/m<sup>2</sup>/24h | Water Repellent  
STRETCH

**COLORS:** MacBlack | MacBlue  
FlashStoneGrey | MacGrey  
MacRed

MS13001



MS13002



MS13003



MS13004



MS13005





# LIGHT JACKETS





# BIKER

UNISEX SIZES XS - 3XL

## PU5000/5000 VINTAGE ROGUE TASLON JACKET

**FABRIC:** Rogue Taslon/  
PU-Coating/Mesh Lining

**FEATURES:** Metal Zippers  
Hidden Hood in Collar  
Taped seams | Many Pockets  
Metal Buckle  
Impeccable Vintage Look

**TECHWISE:** Fifty-Fifty  
Waterproof 5000mmH<sup>2</sup>O  
Breathable 5000g/m<sup>2</sup>/24h

**COLOR:** MacBlack

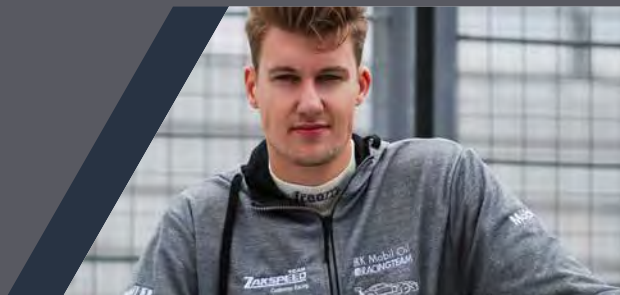
MS16001



## MACSEIS LIGHT JACKET SERIES

MACSEIS LIGHT JACKET SERIES boost's a Line of Xtreme Super Light Ergonomic Comfortable Jackets.

Highly Functional, every single trendy looking impeccable Style from this Series has been tailored to offer you diverse, durable and spectacular comfort. Each Style stands out and is designed to enhance your Corporate CI appearance. Great jackets for Security, Rain Protection, Sales Team or just Leisure Pleasure.



*"MACSEIS Infinity Rain Jacket is really well balanced in its functional technology. I wear it by running exercises. No sweating. Totally comfortable."*

**Nikolaj Sylvest**, Race Driver &  
MACSEIS Brand Ambassador



# COMBAT

MALESIZES S - 5XL

FEMALESIZES XS - 2XL

PU5000/5000  
TECH BLOUSON

**FABRIC:** Smooth Memory Fabric  
PU-Coating  
Tech Breathable Lining

**FEATURES:** Waterproof  
TPU Zippers  
Tech Lining Breathable with  
Heat-Thread | High Collar  
Impeccable Sporty Look

**TECHWISE:** Fifty-Fifty  
Waterproof 5000mmH<sup>2</sup>O  
Breathable 5000g/m<sup>2</sup>/24h

**COLOR:** MacBlack

MS22001



MS22002





# INFINITY

Dintex®

MALESIZES S - 3XL  
FEMALESIZES XS - 2XL

PU5000/5000  
TECH BLOUSON

**FABRIC:** Smooth Memory Fabric  
PU-Coating  
Tech Breathable Lining

**FEATURES:** Waterproof  
TPU Zippers  
Tech Lining Breathable with  
Heat-Thread | High Collar  
Impeccable Sporty Look

**TECHWISE:** Fifty-Fifty  
Waterproof 5000mmH<sup>2</sup>O  
Breathable 5000g/m<sup>2</sup>/24h

**COLOR:** MacBlack

MS23001



MS23002



MS24001



MS24002



# CHAMP

UNISEX S-5XL

## CHAMP SUPER LIGHT TECH BLOUSON

**FABRIC:** 100% Nylon SMOOTH5000  
with PU Functional Coating

**FEATURES:** Amazing Quality  
Knitted Trim | Side Pockets with  
Zippers | Metal Air Intake Eyelets in  
Armpits | Superb Sporty Look

**TECHWISE:**  
Breathable 5.000g/m<sup>2</sup>/24h  
Wind Resistant

**COLOR:** Dusty MacBlue

MS38001



## MACSEIS SUPER LIGHT TECH BLOUSON

The MACSEIS light blouson CHAMP is tailored in an impeccable composition of a superb design and comfortable detailing.

Super light and contemporary trendsetting the CHAMP is a slick ambassador for your Corporate Identity.

A sporty high quality jacket that makes you stand out.

## LOOK COOL



## MACSEIS FUNCTIONAL WORKWEAR

MACSEIS is the new generation in Corporate & WorkWear. We include exciting functional technologies in our impeccable quality Products. Our Product Concept is tailored to achieve five main key-stones; Health | Comfort | Ergonomic Mobility | Environmental Sustainability and CI-Image.

Our 3-layer fabric concept includes different technical Products you can mix to achieve highest level in functional comfort. With our POWERDRY we keep you in a constant drying-mode by your skin while you are actively sweating. With high levels of breathability and waterproof levels we keep you comfortable and protected in both our Tops and Jackets. We incorporate 4WAYSTRETCH in any possible Product for you to have

no restraint on your bone-links while performing. Our Products are 40 (show degree circle) washable and hang to dry only. With MACSEIS Collection you can Mix&Match your modern uniform for yourself of matching your company CI.

MACSEIS Functional WorkWear is designed in a sporty trendy fit, supporting your performance while professional active at work. Our Styles are designed in 3D-Ergonomic articulated body shapes to reach maximum wellness while wearing.

MACSEIS styles are all environmentally sustainable and made using OEKOTEX100 high quality components, detailing and fabrics.

## LOOK THE BUSINESS



MACSEIS Functional WorkWear & Protective Products such as Reinforced Work Pants and Work Shoes are all CE Certified. The Certifications are done by SGS a worldwide-acknowledged Test Institute, and our CE Certified Products undergoes an extreme-test-program to ensure that our Design, Component-Technologies, development, quality, protection and manufacturing of our Protective Products are impeccable and to the best in standards.

## EN14404

MACSEIS Kneepad protection is only guaranteed in connection with the use of both the MACSEIS Kneepad and the CORDURA or X-TREME Fabric reinforced kneepad pockets on MACSEIS Work Pants. MACSEIS Sporty Knee-Pad originates from Motorcycle Protection wear and is a common highly protective Protection Pad designed here from. It is impact absorbent and offers penetration protection.



Several MACSEIS and all MACSEIS WorkWear Products are made in 4WAYSTRETCH, offering a high level of Ergonomic Mobility. We tailor in articulated 3D body shapes to enhance the stretch level to its maximum.

## EN340

All MACSEIS Products are crafted using only OEKOTEX100 Certified components and fabrics and we Design to achieve a maximum in Ergonomic Comfort. It is our core aim to keep you healthy and comfortable while wearing MACSEIS Products.



MACSEIS Products are all Functional and Ergonomic. We include a long list of technical components and functions to enhance your wellbeing while active also going forward. To preserve our world of technologies in your MACSEIS Product we exclusively tailor to wash by max40 degrees and hang to dry – do not tumble dry. This environmental progressive initiative does not stop you from keeping your MACSEIS Product clean. Modern wash detergents are effectively manufactured to clean at much lower water temperatures. MACSEIS recommends using Wash Gels.



MACSEIS Functional WorkWear is reinforced on several sections by the use of CORDURA and or X-TREME Protective Fabrics. Both Brands are acknowledged within both hardwearing work wear and military protective supplies. MACSEIS is using a soft coated CORDURA and X-TREME that are dyed to MACSEIS color-scheme.

## EN ISO 6330

MACSEIS Functional WorkWear Products are washable by 40 degrees Celsius and are in accordance to EN ISO 6330 on washes and drying. Be aware that your wash machine and the wash liquid you are using may have an impact on the procedures of washing MACSEIS TECHWISE & Functional Work Wear Products and its softness after wash. Do not wash over 40 degrees as hot water may have an impact on the Functions included and the Spandex STRETCH incorporated in the Fabrics.

## EN343

MACSEIS Hi-Tech Jackets are all in accordance with EN343 Standard on Waterproof and Breathability.



# PRONEON LINE





# PRONEON BLACKGREY

UNISEX SIZES 44 - 62  
24 - 30

MWW100001



## 250GSM FUNCTIONAL STRETCH WORK PANTS

### FABRIC/CONSTRUCTION FEATURES/CE:

250GSM 50% Cotton/46% Polyester PCA-POWERDRY/  
4% SPANDEX MULTISTRETCH | Reinforced CORDURA

**FEATURES:** Knee-Sections with Kneepad-Pockets EN1440  
Reinforced CORDURA Tool-Pocket Reinforced 3-D Combat-Look  
CORDURA Back Pockets with Flaps  
CORDURA Reinforced Back Down part | Back Reflective Stripes  
Utility Cargo Pocket on left Side  
Pencil Holding Eyelets on Cargo Pocket  
iPhone8S Pocket with zipper integrated in Cargo Pocket  
Coin-Zip-Pocket above Right Pant Pocket | Hidden Zip-Pullers and  
Button for Car-Protection measures  
Inside Silicon-Waist-Band  
Raised Ergonomic Back-Waist Support

**TECHWISE:** PCA-POWERDRY | STRETCH | CORDURA REINFORCEMENTS



MWW300001



MWW200001



MWW300004

## MIX&MATCH



SLASH



FLASH



SIGNATURE



# PRONEON BLUE ORANGE

UNISEX SIZES 44 - 62  
24 - 30

MWW100002



## 250GSM FUNCTIONAL STRETCH WORK PANTS

### FABRIC/CONSTRUCTION FEATURES/CE:

250GSM 50% Cotton/46% Polyester PCA-POWERDRY/  
4% SPANDEX MULTISTRETCH | Reinforced CORDURA

**FEATURES:** Knee-Sections with Kneepad-Pockets EN1440  
Reinforced CORDURA Tool-Pocket Reinforced 3-D Combat-Look  
CORDURA Back Pockets with Flaps  
CORDURA Reinforced Back Down part | Back Reflective Stripes  
Utility Cargo Pocket on left Side  
Pencil Holding Eyelets on Cargo Pocket  
iPhone8S Pocket with zipper integrated in Cargo Pocket  
Coin-Zip-Pocket above Right Pant Pocket | Hidden Zip-Pullers and  
Button for Car-Protection measures  
Inside Silicon-Waist-Band  
Raised Ergonomic Back-Waist Support

**TECHWISE:** PCA-POWERDRY | STRETCH | CORDURA REINFORCEMENTS



MWW300002



MWW200002



MWW300005

## MIX & MATCH



SLASH



FLASH



SIGNATURE

FWW 8



# PRONEON GREY GREEN

MWW100003

UNISEX SIZES 44 - 62  
24 - 30

## 250GSM FUNCTIONAL STRETCH WORK PANTS

### FABRIC/CONSTRUCTION FEATURES/CE:

250GSM 50% Cotton/46% Polyester PCA-POWERDRY/  
4% SPANDEX MULTISTRETCH | Reinforced CORDURA

**FEATURES:** Knee-Sections with Kneepad-Pockets EN1440  
Reinforced CORDURA Tool-Pocket Reinforced 3-D Combat-Look  
CORDURA Back Pockets with Flaps  
CORDURA Reinforced Back Down part | Back Reflective Stripes  
Utility Cargo Pocket on left Side  
Pencil Holding Eyelets on Cargo Pocket  
iPhone8S Pocket with zipper integrated in Cargo Pocket  
Coin-Zip-Pocket above Right Pant Pocket | Hidden Zip-Pullers and  
Button for Car-Protection measures  
Inside Silicon-Waist-Band  
Raised Ergonomic Back-Waist Support

**TECHWISE:** PCA-POWERDRY | STRETCH | CORDURA REINFORCEMENTS



## MIX&MATCH



SLASH



FLASH



SIGNATURE

FWW10



# PRONEON BLACKRED

UNISEX SIZES 44 - 62  
24 - 30

## 250GSM FUNCTIONAL STRETCH WORK PANTS

### FABRIC/CONSTRUCTION FEATURES/CE:

250GSM 50% Cotton/46% Polyester PCA-POWERDRY/  
4% SPANDEX MULTISTRETCH | Reinforced CORDURA

**FEATURES:** Knee-Sections with Kneepad-Pockets EN1440  
Reinforced CORDURA Tool-Pocket Reinforced 3-D Combat-Look  
CORDURA Back Pockets with Flaps  
CORDURA Reinforced Back Down part | Back Reflective Stripes  
Utility Cargo Pocket on left Side  
Pencil Holding Eyelets on Cargo Pocket  
iPhone8S Pocket with zipper integrated in Cargo Pocket  
Coin-Zip-Pocket above Right Pant Pocket | Hidden Zip-Pullers and  
Button for Car-Protection measures  
Inside Silicon-Waist-Band  
Raised Ergonomic Back-Waist Support

**TECHWISE:** PCA-POWERDRY | STRETCH | CORDURA REINFORCEMENTS

MWW100004



MWW300012



MWW200004



MWW300007

## MIX&MATCH



SLASH

FLASH

SIGNATURE

FWW12



# PRONEON BLACKROYALBLUE

UNISEX SIZES 44 - 62  
24 - 30

## 250GSM FUNCTIONAL STRETCH WORK PANTS

### FABRIC/CONSTRUCTION FEATURES/CE:

250GSM 50% Cotton/46% Polyester PCA-POWERDRY/  
4% SPANDEX MULTISTRETCH | Reinforced CORDURA

**FEATURES:** Knee-Sections with Kneepad-Pockets EN1440  
Reinforced CORDURA Tool-Pocket Reinforced 3-D Combat-Look  
CORDURA Back Pockets with Flaps  
CORDURA Reinforced Back Down part | Back Reflective Stripes  
Utility Cargo Pocket on left Side  
Pencil Holding Eyelets on Cargo Pocket  
iPhone8S Pocket with zipper integrated in Cargo Pocket  
Coin-Zip-Pocket above Right Pant Pocket | Hidden Zip-Pullers and  
Button for Car-Protection measures  
Inside Silicon-Waist-Band  
Raised Ergonomic Back-Waist Support

**TECHWISE:** PCA-POWERDRY | STRETCH | CORDURA REINFORCEMENTS

MWW200005



MWW300012



MWW200004



MWW300007

## MIX&MATCH



SLASH



FLASH



SIGNATURE

FWW14







# MACTRONIC LINE





# MACTRONIC BLACKGREY

**STRETCH**

UNISEX SIZES 44 - 62  
24 - 30

## 250GSM FUNCTIONAL STRETCH WORK PANTS

### FABRIC/CONSTRUCTION FEATURES/CE:

250GSM 50% Cotton/46% Polyester PCA-POWERDRY/  
4% SPANDEX MULTISTRETCH | Reinforced CORDURA

**FEATURES:** Knee-Sections with Kneepad-Pockets EN1440  
Reinforced CORDURA Tool-Pocket Reinforced 3-D Combat-Look  
CORDURA Back Pockets with Flaps  
CORDURA Reinforced Back Down part | Back Reflective Stripes  
Utility Cargo Pocket on left Side  
Pencil Holding Eyelets on Cargo Pocket  
iPhone8S Pocket with zipper integrated in Cargo Pocket  
Coin-Zip-Pocket above Right Pant Pocket | Hidden Zip-Pullers and  
Button for Car-Protection measures  
Inside Silicon-Waist-Band  
Raised Ergonomic Back-Waist Support

**TECHWISE:** PCA-POWERDRY | STRETCH | CORDURA REINFORCEMENTS

MWW11000.1



## MIX&MATCH



SLASH



FLASH



SIGNATURE

FWW20



# MACTRONIC BLACKRED

**STRETCH**  
NETECH FABRIC

UNISEX SIZES 44 - 62  
24 - 30

## 250GSM FUNCTIONAL STRETCH WORK PANTS

### FABRIC/CONSTRUCTION FEATURES/CE:

250GSM 50% Cotton/46% Polyester PCA-POWERDRY/  
4% SPANDEX MULTISTRETCH | Reinforced CORDURA

**FEATURES:** Knee-Sections with Kneepad-Pockets EN1440  
Reinforced CORDURA Tool-Pocket Reinforced 3-D Combat-Look  
CORDURA Back Pockets with Flaps  
CORDURA Reinforced Back Down part | Back Reflective Stripes  
Utility Cargo Pocket on left Side  
Pencil Holding Eyelets on Cargo Pocket  
iPhone8S Pocket with zipper integrated in Cargo Pocket  
Coin-Zip-Pocket above Right Pant Pocket | Hidden Zip-Pullers and  
Button for Car-Protection measures  
Inside Silicon-Waist-Band  
Raised Ergonomic Back-Waist Support

**TECHWISE:** PCA-POWERDRY | STRETCH | CORDURA REINFORCEMENTS

MWW110002



MS40007



MWW210001



MS26005

## MIX&MATCH



SLASH



FLASH



SIGNATURE

FWW22



# MACTRONIC MACROYALBLUE

**STRETCH**

UNISEX SIZES 44 - 62  
24 - 30

250GSM FUNCTIONAL STRETCH WORK PANTS

**FABRIC/CONSTRUCTION FEATURES/CE:**

250GSM 50% Cotton/46% Polyester PCA-POWERDRY/  
4% SPANDEX MULTISTRETCH | Reinforced CORDURA

**FEATURES:** Knee-Sections with Kneepad-Pockets EN1440  
Reinforced CORDURA Tool-Pocket Reinforced 3-D Combat-Look  
CORDURA Back Pockets with Flaps  
CORDURA Reinforced Back Down part | Back Reflective Stripes  
Utility Cargo Pocket on left Side  
Pencil Holding Eyelets on Cargo Pocket  
iPhone8S Pocket with zipper integrated in Cargo Pocket  
Coin-Zip-Pocket above Right Pant Pocket | Hidden Zip-Pullers and  
Button for Car-Protection measures  
Inside Silicon-Waist-Band  
Raised Ergonomic Back-Waist Support

**TECHWISE:** PCA-POWERDRY | STRETCH | CORDURA REINFORCEMENTS

MWW110004



MS40007



MWW210001



MWW300007

## MIX&MATCH



SLASH



FLASH



SIGNATURE

FWW 24



# MACTRONIC MACGREY

**STRETCH**  
NETECH PANTS

UNISEX SIZES 44 - 62  
24 - 30

## 250GSM FUNCTIONAL STRETCH WORK PANTS

### FABRIC/CONSTRUCTION FEATURES/CE:

250GSM 50% Cotton/46% Polyester PCA-POWERDRY/  
4% SPANDEX MULTISTRETCH | Reinforced CORDURA

**FEATURES:** Knee-Sections with Kneepad-Pockets EN1440  
Reinforced CORDURA Tool-Pocket Reinforced 3-D Combat-Look  
CORDURA Back Pockets with Flaps  
CORDURA Reinforced Back Down part | Back Reflective Stripes  
Utility Cargo Pocket on left Side  
Pencil Holding Eyelets on Cargo Pocket  
iPhone8S Pocket with zipper integrated in Cargo Pocket  
Coin-Zip-Pocket above Right Pant Pocket | Hidden Zip-Pullers and  
Button for Car-Protection measures  
Inside Silicon-Waist-Band  
Raised Ergonomic Back-Waist Support

**TECHWISE:** PCA-POWERDRY | STRETCH | CORDURA REINFORCEMENTS

MWW110003



## MIX&MATCH



SLASH



FLASH



SIGNATURE



# MACTRONIC MACWHITE

**STRETCH**

UNISEX SIZES 44 - 62  
24 - 30

## 250GSM FUNCTIONAL STRETCH WORK PANTS

### FABRIC/CONSTRUCTION FEATURES/CE:

250GSM 50% Cotton/46% Polyester PCA-POWERDRY/  
4% SPANDEX MULTISTRETCH | Reinforced CORDURA

**FEATURES:** Knee-Sections with Kneepad-Pockets EN1440  
Reinforced CORDURA Tool-Pocket Reinforced 3-D Combat-Look  
CORDURA Back Pockets with Flaps  
CORDURA Reinforced Back Down part | Back Reflective Stripes  
Utility Cargo Pocket on left Side  
Pencil Holding Eyelets on Cargo Pocket  
iPhone8S Pocket with zipper integrated in Cargo Pocket  
Coin-Zip-Pocket above Right Pant Pocket | Hidden Zip-Pullers and  
Button for Car-Protection measures  
Inside Silicon-Waist-Band  
Raised Ergonomic Back-Waist Support

**TECHWISE:** PCA-POWERDRY | STRETCH | CORDURA REINFORCEMENTS

MWW110003



MS19011



MWW210003



MS26017

## MIX & MATCH



SLASH



FLASH



SIGNATURE

FWW28



# RIPTIDEHYBRID

MULTISTRETCH

MALESIZES S - 5XL

FEMALESIZES XS - 2XL

## 360GSM MULTISTRETCH KNIT HYBRID TOP

**FABRIC:** Smooth Hard Wearing 360gsm MULTISTRETCH knit  
Bonded Teddy Fleece in Hood | Melangé

**FEATURES:** Big No. 8 strong zippers | X-TREME500 Protective Fabric  
on Shoulder Part | Integrated Hood

**TECHWISE:** Breathable knit

**COLORS:** MacBlack/MacWhite | MacBlue/MacOrange Fluorescent  
MacGrey/MacGreen Fluorescent





# SAFETY SHOES





# PRONEON SAFETY SHOES

POWERDRY®



SIZES 38 - 47



MWW600003

SAFETY-SHOES S1P ESD

**CONSTRUCTION/CE:** S1P ESD | KPU-One-Piece Sports Top | Strong Composite Toe Cap | Integrated Reinforced Anti-Penetration Kevlar Protection Sole | Strong Impact Absorbent & Anti-Glide Outer Sole Heel | ESD ANTISTATIC Function

**TECHWISE:** Physical Quick Dry Inside Fabric | Breathable | Comfortable Ergonomic Inner Sole

**COLORS:** MacBlack/MacGreenFluorescent | MacBLue/MacOrangeFluorescent - MacBlack/Macred



MWW600001



MWW600002



# MACTRONIC SAFETY SHOES

POWERDRY®



SIZES 38 - 47



MWW610004

SAFETY-SHOES S1P ESD

**CONSTRUCTION/CE:** S1P ESD | KPU-One-Piece Sports Top | Strong Composite Toe Cap  
Integrated Reinforced Anti-Penetration Kevlar Protection Sole  
Strong Impact Absorbent & Anti-Glide Outer Sole | Heel | ESD ANTISTATIC Function

**TECHWISE:** Physical Quick Dry Inside Fabric | Breathable | Comfortable Ergonomic Inner Sole

**COLORS:** MacBlack/MacGreenFluorescent | MacBLue/MacOrangeFluorescent - MacBlack/Macred



MWW610001



MWW610002



MWW610003



MWW610005



# PRONEON SAFETY SHOES

POWERDRY®



SIZES 40 - 47



MWW800004

PRONEON TECHNICAL SAFETY SHOES S3 ESD

**COLORS:** MacBlack-MacGrey / MacBlack-MacRed / MacBlack-MacGreen  
MacBlack-MacRoyalBluer

**CONSTRUCTION/CE:** S3 ESD | Strong Composite Toe Cap | Strong-Tread Fabric Composition | Integrated Reinforced Anti-Penetration Kevlar Protection Sole  
Strong Impact Absorbent & Anti-Glide Outer Sole | ESD ANTISTATIC Function

**TECWISE:** POWERDRY | Waterproof | Breathable | Comfortable Ergonomic Inner Sole



MWW800001



MWW800002



MWW800003



# MACTRONIC SAFETY BOOTS

POWERDRY®



SIZES 40 - 47



MWW800008

PRONEON TECHNICAL  
SAFETY BOOTS S3 ESD

**COLORS:** MacBlack-MacGrey / MacBlack-MacRed / MacBlack-MacGreen / MacBlack-MacRoyalBluer

**CONSTRUCTION/CE:** S3 ESD | Strong Composite Toe Cap | Strong-Tread Fabric Composition Integrated Reinforced  
Anti-Penetration Kevlar Protection Sole | Strong Impact Absorbent & Anti-Glide Outer Sole | ESD ANTISTATIC Function

**TECWISE:** POWERDRY | Waterproof | Breathable | Comfortable Ergonomic Inner Sole



MWW800006



MWW800005



MWW800007



# MACSEIS TIGHT-FIT SOCKS

POWERDRY®

ONE SIZE



MWW500005

## MACSEIS TIGHT-FIT SOCKS

**Colors:** MacGreen/MacOrange/MacRed/MacBlack/MacRoyalBlue

**FEATURES:** Technical Reinforced Tight-Fit Work Socks | Pack of 2 Pairs  
Reinforced Toe & Heel Sections | Superb Comfort

**TECHWISE:** POWERDRY | Breathable



MWW500006



MWW500007



MWW500008



MWW500009



# MACSEIS SEAMLESS CAPS

**STRETCH**  
TECH FABRIC

ONE SIZE



MWW900001

MACSEIS SEAMLESS CAP

**FEATURES:** Seamless - Curved Peak

**TECHWISE:** STRETCH ONE SIZE



MWW900002



MWW900003



# MACSEISWORKBELTS

SIZES 95/105/115/125/135



MWW500002



MWW500003



MWW500004



MWW500011



MWW500012



MWW500013

## MACSEIS WORK BELTS

**COLORS:** MacBlack | MacNavy | MacGrey | MacBlack-MacGrey | MacBlack-MacRed | MacBlack-MacRoyalBlue

**FEATURES:** Black Metal Buckle | 40mm Wide | Strong Leather or Strong Felt | Contrast Stitching



# MACSEIS KNEEPADS

ONE SIZE



MWW500001

MACSEIS TECHNICAL PROTECTION KNEEPADS (PAIR)

**FEATURES:** Super Flat Technical Protection Kneepads (Pair)  
Classic MOTO GP Protection Pad Design

**TECHWISE:** 100% Cellular Ballistic Rubber | Impact Absorbent



# MACSEIS HIGHVIS

**STRETCH**  
HITECH FABRIC

**POWERDRY®**

CE

COMING SOON





WE WORK TO PERFORM  
PERFORM TO CREATE  
THE RESTLESS URGE TO GO TO THE NEXT LEVEL  
WHILE SEEKING  
PERFECTION